

**BRAZEL MOORE**

**LAWYERS**

**IMPORTANT NOTICE**

WEEKLY PAYMENTS FOR INJURED WORKERS

It is important to know that many injured workers' weekly payments will cease during December 2017 unless the worker has obtained by the cessation date:

- A concession from the insurer that the worker's permanent impairment exceeds the threshold (for existing recipients only);
- A certificate from the Workers Compensation Commission (for existing recipients only) that the injured person has not reached maximum medical improvement;
- A certificate from the Workers Compensation Commission that their permanent impairment is found to be greater than 20% (whole person impairment).

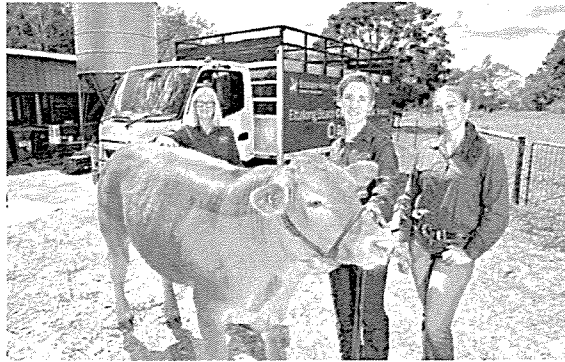
Insurers are unable to extend weekly benefits in the absence of one of the requirements listed above.

**An URGENT application may be able to be made to the Workers Compensation Commission to protect your rights to ongoing weekly benefits.**

If you wish to know your rights, please contact Peter Moore of Brazel Moore Lawyers, Gosford on 4324 7699.

**36 NEWS**

UMINA BEACH



Brisbane Water Secondary College agriculture teacher Louisa Briggs with students Tyler Jeffrey, 16, and Kynesha Stapleton, 15, and one of the school's prize steers. Picture: Troy Snook

# New truck, no bull

**Cathy Stubbs**

AN \$80,000 donation has saved the day for the agriculture program at Brisbane Water Secondary College's Umina Beach campus. Ettalong Beach Bendigo Bank stumped up the money for a new cattle truck for the school which has raised many show champions over the years - including Grand Champion Purebred Steer at the Sydney Royal Easter Show this year.

Brisbane Water Secondary College principal Paul Gilmore said funding had come just in time with the old truck on its last legs. "On more than one occasion the old truck had broken down along the road," Mr Gilmore said. "There was a critical need for this cattle truck to be replaced. We really wouldn't have any other way of funding within the existing school budget without this partnership."

Ettalong Beach Community Bank chairman Mick Gage said this was the first major investment by the branch into the local community. "This will directly improve the ability of agricultural students to learn and grow within their field. Umina campus has such a well-regarded reputation as an agricultural educator." Mr Gage said the bank's investment decisions were made by locals for locals.

## Did you know the new McQuoin Park offers short term care and accommodation?

**RESPIRE AVAILABLE**



Carers need a break from time to time

Whether it's planned or an emergency, McQuoin Park's experienced care team are here to help. Offering 24/7 registered nursing care, all meals prepared daily onsite and

a range of recreational activities, our respite program gives carers the confidence that their loved one will receive the care they need, in a supportive home-like environment.

 **catholic healthcare**

McQuoin Park  
35 Pacific Hwy, Wahroonga

1800 551 834

Residential Aged Care  
Home & Community Services  
Retirement Living